

## Moonee Valley City Council

# Clocktower Centre

## Technical Specifications



Updated January 2024

**Venue Contact:**

Phone number:

03 9243 9191

**Technical Services Supervisor:**

Phone number:

Kynan Batschowanow

03 9243 1537

Email address:

[kbatschowanow@mvcc.vic.gov.au](mailto:kbatschowanow@mvcc.vic.gov.au)

# **STAGE**

## **Brief Stage Description:**

Unraked stage with a proscenium arch and flying facilities. Structural plywood floor covered with fully sprung Masonite sheets. Screwing into surface permitted but larger holes to be authorised in advance by Technical Services Supervisor.

Stage distributed load limit	<b>700kg / m2 Stage</b>
Point load limit	<b>400kg</b>
Orchestra Pit distributed load limit	<b>200kg / m2, maximum 6,000kg Orchestra</b>
Pit Point load limit	<b>200kg</b>
Stage Rake	<b>NO</b>

## **Stage Dimensions:**

### **Proscenium**

Width **10.96 metres**      Height **6 metres**

### **Setting Line**

**1.75 metres upstage of the fixed stage/forestage.**

### **Distance From** (*SL = Setting Line, CL = Centre Line*)

SL to DS edge of apron	<b>4200mm</b>
SL to US edge of Orchestra Lift/Pit	<b>1750mm</b>
SL to last upstage fly line	<b>7250mm</b>
SL to rear wall	<b>7400mm</b>
CL to OP wall (or obstruction)	<b>8100mm</b>
CL to PS wall (or obstruction)	<b>11000mm</b>
Stage to underside of grid / roof	<b>15000mm</b>
US edge of pit to last upstage fly line	<b>9070mm</b>
DS edge of apron to rear wall	<b>11600mm</b>

### **Overhead obstructions**

PS Gallery height 4000mm  
OP Gallery height 5600mm

## **Auditorium:**

Auditorium consists of stalls (291 seats) and a dress circle (214 seats).

Orchestra lift/pit seating installed	<b>545</b>
Seating capacity <u>without</u> Orchestra lift/pit seating installed	<b>505</b>

## Orchestra Lift - Pit:

### **Orchestra Pit**

A motorised orchestra pit that must be operated by competent staff only.  
Set positions for orchestra lift at auditorium level is 0mm

Stage level at **1100mm** above auditorium.

Orchestra pit level at **1600mm** below auditorium.

Lift can be set at any height                      **No – 600mm below stage level only for Orchestra**

SWL of orchestra lift                              **6 tonnes with a maximum point loading of 1.02 tonnes**

Dimensions of the orchestra pit              Usable area for an orchestra is 12m x 2.5m

## Loading Dock:

### **Access**

Truck access via Loading Dock roller door on Pascoe Vale Road. Vehicles may be used for loading in the dock if footpath is kept clear and unobstructed *at all times*.

Please note larger vehicles are required to park on Pascoe Vale Road with goods hand delivered to dock. Traffic management plans may be required – please contact Technical Services Supervisor for more details.

Dock Ceiling Height                              **6500mm**

Dock Length (Lift to footpath)              **9500mm**

Outer Roller Door                                **4400mm High**  
**3200mm Wide**

Inner Roller Door                                **3350mm High**  
**3300mm Wide**

### **Restrictions / Obstructions**

Stage Level is 2100mm above dock/street level. Goods lift 1900 x 2200mm.

Semi-trucks are to be parked on Pascoe Vale Road and all equipment to be transferred by hand to the goods lift.

## Access Equipment:

### **Elevated Work Platform**

JLG 20MVL self-propelled single person lifter

Maximum reach is 5970mm

### **EWP Restrictions**

Must be operated by Clocktower Staff only.

One additional staff member to be spotter whilst in use.

Cannot be used on the ramps.

### **Ladders**

(1) 3 metre platform ladder

(1) 2.4 platform ladder

(2) 1.8m step ladder

(2) 0.9m step ladder

Flying Facilities:

**Fly System**      Single purchase handline (SP)

**Fly System Details**

Operating position	<b>Stage Level, OP</b>
Total number of lines	<b>30</b>
Panorama Lines	<b>1 bar OP and 1 bar PS</b>
Batten flight height	<b>14500mm</b>
Batten type	<b>40NB medium steel pipe (48.3 outside diameter)</b>
Batten length	<b>11200mm</b>
LX bars can be swung	<b>YES *</b>
Fly bars can be swung	<b>YES *</b>

**Standard Operation**

Batten point load	<b>at lift line 325kg, between lift lines 60kg</b>
Batten W.L.L.	<b>350kg</b>
Cradle capacity	<b>350kg</b>

**With Cradle Extensions\***

Batten point load	<b>at lift line 400kg, between lift lines 60kg</b>
Batten W.L.L.	<b>500kg</b>
Cradle capacity	<b>500kg</b>

**Additional Information**

Standard batten weight	<b>24kg</b>
LX bar patch tube weight	<b>120kg</b>
Quest FB weight (per bar)	<b>48kg</b>

**Additional Rigging Points**      None

\* Please contact Technical Services Supervisor for further advice and information

Drapery and Masking:

Type	Material	Colour	Width	Height	Quantity
House Curtain	Velour	Red	6350mm	6500mm	1
Borders	Wool	Black	12200mm	3000mm	4
Legs	Wool	Black	2200mm	6300mm	4 pair
Tabs / Smother	Wool	Black	6400mm	6300mm	2 pair
Cyclorama	Cotton Canvas	White	12200mm	7000mm	1
Scrim	N/A				
Safety Curtain	N/A				

Rigging Notes:

Please notify Technical Services Supervisor of any and all flying requirements. All flown items must be rigged with rated equipment and is subject to approval by a venue representative.

Rigging of items may require use of a qualified rigger. The Clocktower Centre reserves the right to refuse any flown item at any time.

All flying operation must be performed by a Clocktower Centre staff member.

## Hanging Plot:

**SL:** Setting Line **SP:** Single purchase fly system **W.L.L.:** Maximum Working Load Limit

\* Conditionally Available lines may **only** be used with prior approval from Technical Services Supervisor

Line	Dist. From SL	Line Type	W.L.L	Venue Allocation	Available Line For hiring company use
H.C	350mm DS	SP	350kg	House Curtain	Not available
1	150mm DS	SP	350kg	Leg	Not available
2	N/A				
3	250mm	SP	350kg	Projector	Not available
4	N/A				
5	650mm	SP	230kg	LX 1 – patch tube	Conditionally available*
6	850mm	SP	302kg	Leg – rigged FB	Not available
7	1050mm	SP	350kg		Available
8	1250mm	SP	350kg		Available
9	1450mm	SP	350kg		Available
10	1650mm	SP	350kg	Border	Not available
11	1850mm	SP	350kg	Leg	Not available
12	2050mm	SP	350kg		Available
13	N/A				
14	2450mm	SP	230kg	LX 2 – patch tube	Conditionally available*
15	2650mm	SP	350kg		Available
16	2850mm	SP	350kg	Border	Not available
17	3050mm	SP	350kg	Mid-stage Tab	Not available
18	3250mm	SP	350kg		Available
19	N/A				
20	3650mm	SP	230kg	LX 3 – patch tube	Conditionally available*
21	3850mm	SP	350kg		Available
22	4050mm	SP	350kg	Border	Not available
23	4250mm	SP	302kg	Leg – rigged FB	Not available
24	4450mm	SP	230kg	LX4 – patch tube	Conditionally available*
25	N/A				
26	4850mm	SP	350kg	LX 5 – Back LX	Conditionally available*
27	5050mm	SP	350kg	Border	Not available
28	5250mm	SP	350kg	Leg	Not available
29	5450mm	SP	350kg		Available
30	5650mm	SP	350kg		Available
31	5850mm	SP	350kg	LX6 – Cyc LX	Not available
32	N/A				
33	6250mm	SP	350kg	Rear Tabs	Not available
34	6450mm	SP	350kg		Available
35	6650mm	SP	350kg		Available
36	6850mm	SP	350kg	Panorama OP – Side LX	Conditionally available*
37	7050mm	SP	350kg	Panorama PS – Side LX	Conditionally available*
38	7250mm	SP	350kg	Cyclorama	Not Available

NB: Lines 36 and Bar 37 run over side stage wings, perpendicular to other bars

Staging Units:

- 4 x Ezy Staging Units, 1800 x 2400 x 400/600mm (variable height)
- 3 x Ezy Staging Treads, 400mm
- 3 x Ezy Stage 1200 x 2400 x 200mm high (single height)
- 6 x Ezy Stage 1200 x 2400 x 400/600mm (variable height)

## **LIGHTING**

Positions:

**Stage LX Bars**      LX Bars can be swung with prior notice to the Technical Services Supervisor.  
*See hanging plot for standard LX bar locations*

**FOH**

**Bridge 2**

Setting Line to lighting bar      **12000mm**  
 Usable bar width                      **12900mm**

**Bridge 1**

Setting Line to lighting bar      **6400mm**  
 Usable bar width                      **12900mm**

**Dress Circle Bar**

Setting Line to lighting bar      **18700mm**  
 Usable bar width                      **16500mm**  
 Notes                                      No patch points available on bar.

**FOH Perches (OP & PS)**

Perch US (OP &PS)                      **8200mm (CL), 1800mm (SL)**  
 Perch DS (OP &PS)                      **8200mm (CL), 5700mm (SL)**

Maximum lights per perch          **6**  
 Notes                                      Maximum rigging height 4000mm

Standard Rig:

See Standard Rig Plan

Lighting Control:

Lighting desk:                              **ETC Ion Xe20 – 20-bank fader wing**  
 Signal distribution: **DMX Nodes throughout venue via network switch with multiple, customisable universe capacity**  
 DMX Protocol:                              **sACN network protocol**

Dimmer Racks:

**Total Dimmer Racks                      10**  
 2.4Kw Dimmer Racks                      **Jands HP -11 (Digital)**  
 Total dimmers @ 2.4kw per dimmer **144 channels**  
 5Kw Dimmer Racks                        **Jands HP - 3 (Digital)**  
 Total dimmers @ 5kw per dimmer      **18 channels**

## House Lights:

Independent control	<b>Yes – Dynalite controlled</b>
Control positions	<b>Control Room and SM Console</b>
Fade time adjustable	<b>Yes</b>

## Standard Stage Luminaire:

### **LED Profiles**

<b>Make</b>	<b>Model</b>	<b>Angle</b>	<b>Detail / Accessories</b>	<b>Watt</b>	<b>Total</b>
Showtec	Performer Profile 600 MkIII	15/30	Zoom/Focus knobs, gobo, iris	260W	34
Showtec	Performer Profile 600 MkIII	25/50	Zoom/Focus knobs, gobo, iris	260W	38

### **LED Fresnels**

<b>Make</b>	<b>Model</b>	<b>Detail / Accessories</b>	<b>Watt</b>	<b>Total</b>
Showtec	Infinity TF 260C7	Barndoors, RGB LED Chip	280W	<b>32</b>

### **LED Pars**

<b>Make</b>	<b>Model</b>	<b>Angle</b>	<b>Detail / Accessories</b>	<b>Watt</b>	<b>Total</b>
Chauvet	ColorDash Hex 12	MFL	RGBAW + UV	117W	<b>26</b>

### **Cyc Wash**

<b>Make</b>	<b>Model</b>	<b>Detail / Accessories</b>	<b>Watt</b>	<b>Total</b>
Chauvet	Ovation C-640FC	Gel Frames	190w	<b>12</b>

### **Followspots**

<b>Make</b>	<b>Model</b>	<b>Detail / Accessories</b>	<b>Watt</b>	<b>Total</b>
Selecon	Pacific	4 colour magazine	1200w	<b>2</b>

### **Additional**

<b>Item</b>	<b>Make</b>	<b>Model</b>	<b>Detail / Accessories</b>	<b>Watt</b>	<b>Total</b>
Mirror Ball	-	18"	18" diameter with motor		<b>1</b>
Blinder	Molefay	Duet	Dimmer	1200w	<b>2</b>
Strobe	Martin	Giga strobe	DMX controlled (2) channels	1500w	
Smoke Machine	Martin	Magnum 1800	DMX controlled		<b>2</b>
Hazer	Martin	Unique	DMX controlled		<b>1</b>

Venue Patching:

Location	Quantity	Patch Number <i>(PS to OP)</i>	Detail / Accessories
FOH 1	26	25-44 / 75-80	
FOH 2	26	45-64 / 69-74	
LX 1	36	1 - 36	
LX 2	24	1 - 24	
LX 3	24	1 – 24	
LX 4	24	1 - 24	
LX 5	N/A		Back Light bar
LX 6	N/A		Cyc Unit bar
PERCH DSP	6	13 - 18	
PERCH DSOP	6	19 - 24	
PERCH USP	6	1 - 6	
PERCH USOP	6	7 - 12	

Production Desk:

Production desk set-up at the back of the stalls. Table accommodates 2 people with dimmable lighting, DMX for the lighting desk, talkback, and audio patch lines.

Power:

**3 Phase Outlets**

- 2 x 40A under stage on PS (one for dimmer only)
- 1 x 40A under stage on OP (dimmer only)
- 1 x 40A tech office.
- 8 x 40A PS Gallery (dimmer only) & 1 x 32A PS Gallery.
- 2 x 40A OP Gallery
- 2 x 40A in Foyer
- 1 x 40A next to SM desk – AUDIO only
- 1 x 40A in studio

Cabling:

**240v Extension Cable**

The theatre has stock of extension leads to accommodate the venue's standard lighting rig.

**Looms**

- (1) 20m 5-way Weilands
- (1) 20m 8-way Weilands
- (2) 30m 5-way Weilands
- (2) 30m 8-way Weilands

**3 phase Extensions**

- (2) 40 AMP 20m



# **AUDIO**

## **Signal Distribution:**

Dante, Mac-based Dante Virtual Soundcard, 3-pin XLR tielines throughout venue

## **Control - Amplification:**

### **Primary Mixer**

Yamaha CL1, PW800W power supply  
RIO 3224 rack – onstage Prompt  
RIO 8 Output – gallery (amp rack)

### **Amplifiers**

NEXO – NEXNXAMP4X4C  
2 x L-Acoustics LA4X  
2 x MC2 Audio T1000 power amplifiers, 2 channel

### **EQ, FX, Compression/ Limiter**

Yamaha CL1

## **Speakers:**

### **FOH Speakers**

**Left and Right -** 1 x Nexo GEOS1210, 2 x Nexo GEOS1230 array  
**Subs (Centre rigged) -** 2 x Nexo – RS15P

### **Additional speakers (Foldback or front fill)**

4 x QUEST HPI 125 overhead monitors rigged on LX 1  
4 x QUEST HPI 125 overhead monitors rigged on LX 3  
8 x L'Acoustic X12  
6 x RCF ART310 powered speaker  
2 x Tannoy T300  
2 x Funktion 1 Minibass 212

## **Additional Mixer:**

Yamaha CL3, Allen & Heath Qu16

## **Stage Box:**

RIO 3224 (ethercon), XLR loom box 12 input/4 return

## **Control Positions:**

### **Control Room**

Above Dress Circle, open to Auditorium

### **Auditorium**

Located at rear of Stalls in the centre of row N or M. Seats must be allocated if company desk is to be placed in this position.

### **Other**

Prompt side at Stage Manager's console, company mixer can be patched through to house system.

Patching:

Location	Quantity	Numbering	Detail
Control Room	40	1 – 40	32 sends, 8 returns
Production Point	40	1 – 40	32 sends, 8 returns
OP Wing	24	1 – 24	24 sends
Orchestra Pit	24	1 – 24	24 sends
Rear Stage Prompt	4	1 – 4	4 sends
Rear Stage O Prompt	4	1 – 4	4 sends
Foyer	4	1 – 4	4 returns

\*all patch points to prompt Rack

Dante Patching:

Location	Quantity	Detail
Bio Box	3 Primary, 3 Secondary	
Stalls Row N	3 Primary, 3 Secondary	
Amp Rack	2 Primary 2 Secondary	
PS Rack	3 Primary, 2 Secondary	

Cabling:

**Audio Cable**

The theatre has a good stock of cables to accommodate the venue's audio equipment. The inventory includes 3 pin XLR, speakon and cat 6 cabling. If additional audio equipment is being used, additional cabling will be required.

Playback:

Item	Make	Model	Detail	Total
<b>Mac Mini</b>	Apple		Qlab 5, Powerpoint, Dante Virtual Sound Card	<b>1</b>
<b>CD Player</b>	Tascam	CD500	CD500	<b>2</b>
<b>3/4" jack input</b>			Company-supplied laptop*	

\* Company must supply appropriate adapters for their laptop/phone to fit 3/4" Jack (headphone jack)

Accessories:

Item	Model	Detail / Accessories	Total
Microphone Stands	Tripod Base	Long	<b>10</b>
	Tripod Base	Short	<b>5</b>
	Round Base	Long	<b>4</b>
	Round Base	Short	<b>4</b>
	Table stand		<b>3</b>
Lectern			<b>2</b>
Speaker Stands	Tripod Base		<b>4</b>

Microphones - DIs:

Make	Model	Detail / Accessories	Use	Total
AKG	CK 31	Condenser Cardioid	Choir	3
Beyer	M88TG	Dynamic HC	Vocal/Kick Drum	2
Beyer	M201TG	Dynamic HC	Instrum./Drum	4
DPA	Defacto II	Wired or wireless with adaptor. Condenser, HC	Vocals	2
DPA	4011C	Condenser Cardioid	Choir/instrument	3
Microtech Gefell	M930	Lg diaphragm Condenser cardioid. Shock mount.	Piano/instrument	2
Shure	KSM141	Condenser Omni/Cardioid	Instrument	2
Shure	KSM137	Condenser Cardioid	Instrument	4
Shure	SM Beta 58a	Dynamic HC	Vocals	5
Shure	SM 57	Dynamic Cardioid	Instrument	4
Sennheiser	EW500 G3 series	Radio Channels Receivers		12
	JAG IMX6A	Headset mic Condenser Omni	Vocals	7
		Lapel mic Condenser Omni	Vocals	6
Sennheiser	EW 500 G3/e945 capsule	Handheld Radio Dynamic HC	Vocals	6
Sennheiser	E835 S	Dynamic Cardioid Switch		4
Sennheiser	EW 100 G4	Radio Wireless Dynamic Cardioid Switch		2
Sennheiser	E840	Dynamic Hyper Cardioid		3
Shure	Beta98 AMP	A75M Stand mount. Condenser Cardioid	Drums/horns	4
Shure	Beta52a	Dynamic cardioid	Kick Drum	1
Shure	MX418	Goose Neck Condenser	Lectern	2
Shure	MX412	Goose Neck Condenser	Lectern	2
Shure	MX393/S	Plate Microphone Condenser	Choir/tap	3
Shure	Beta91A	Plate Microphone Condenser	Kick Drum/instru	1
BSS	Active DI	AR133		2
Radial	JDI	Passive Direct		4
Radial	JPC	Stereo Active DI		2
Radial	USB DI	Stereo		2
Radial	Pro AV	Passive Stereo DI		2
Radial	J48	Active DI		2
Radial	ProAV2	Stereo		2

# **AUDIO VISUAL**

## Vision Operation:

- 1 x Roland V-60HD Full HD switcher
- 1 x Blackmagic Design SmartView HD Screen
- 1 x Blackmagic Design SmartView Duo
- 1 x Mac Mini with Qlab 5 and Microsoft Office

## Playback options:

- USB
- CD/DVD
- HDMI input for company-supplied laptop\*

\* Company must supply appropriate adapters for their laptop to fit HDMI output

## Projectors:

- 2 x Hitachi CPWU 9410 with ultra-short throw lens, 8500 lumens
  - Native Resolution: 1920x1200*
  - Aspect Ratio: 16:10*
  - Video imaging should be in HD format, so 1080p/60 or 1080i/60*
- 1 x Mitsubishi board room projector, 3000 lumens
- 3 x Hitachi CP-WX4042WN Boardroom Projectors, 4000 Lumens

## Surfaces:

- Cyclorama (standard surface)
- Fast fold screen 20'x11'3" (additional setup)

## Projector Rigging Points:

- Line 5 (standard position to fit cyclorama surface)

## Cabling:

The theatre has 8 SDI runs through the building. 2 in prompt corner and 2 in the prompt mid gallery. 2 UHD on dress circle rail and 2 UHD in N row production point.

The theatre has an assortment of SDI, HDMI and VGA cables.

## Streaming Equipment\*:

- 2 x BirdDog Eyes P200 PTZ (Pan Tilt Zoom) cameras
- 1 x Canon XA40 auxiliary camera
- 1 x BirdDog PTZ Keyboard
- 1 x BlackMagic UltraStudio 4k Mini Capture Device running *Desktop Video*
- 1 x iMac running *OBS Studio*
- 1 x Roland V-60HD Full HD switcher

\* Note: use of streaming equipment must be arranged prior to event. Please contact the Technical Services Supervisor for more information.



Production Facilities:

**Production Office**

No. Dressing rooms can be used as an office

**Phone**

No

**Fax**

No

**Access to phone**

No

**Internet Access**

Public network available in FOH areas. Limited access BOH

Green Room:

Tea / Coffee facilities	<b>Yes</b>
Fridge	<b>Yes</b>
Microwave	<b>Yes</b>
Running water	<b>Yes</b>

Stage Door - Backstage Access:

Stage Door is located next to the loading dock on Pascoe Vale Road. This door is unsupervised and kept locked at all times. Generally access for cast and crew is through main front entrance 0800-1700. Access through the foyer outside these hours can be negotiated with the Technical Services Supervisor.

## **VENUE**

Studio Space:

Black Box theatre and rehearsal/Dressing room space  
10.5m x 9m, black stage (sprung MDF floor) with ceiling to floor mirrors and masking  
Bookings required for use

Function Spaces:

Various, see <https://clocktowercentre.com.au/> for more information.

Venue Plans:

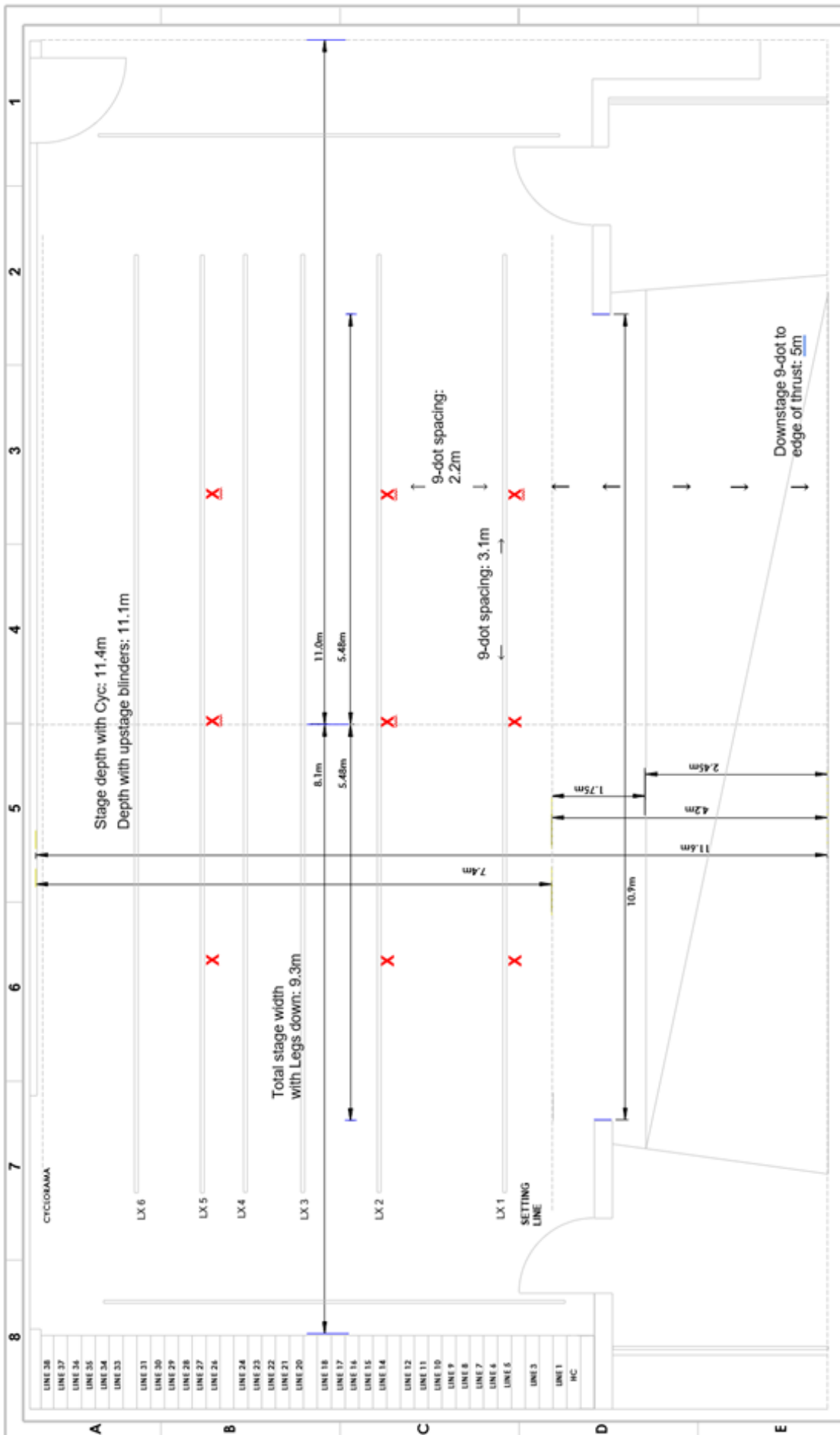
**Venue Plan Available**

Yes, a PDF copy available on request.

**Venue Section Available**

Yes, a PDF copy available on request.

Stage Plan with 9-dot positions (high-resolution PDF version available on request)



Venue Contacts:

Venue Address **750 Mt Alexander Road, MOONEE PONDS, VIC 3039**

Venue Postal Address **750 Mt Alexander Road, MOONEE PONDS, VIC 3039**

Staff Contacts:

**Acting Coordinator of Arts and Culture**

Mobile

Email Address

**Natalie Whalley**

(03) 9243 1153

nwhalley@mvcc.vic.gov.au

**Technical Services Supervisor**

Email Address

**Kynan Batschowanow**

kbatschowanow@mvcc.vic.gov.au

**Acting Team Leader Venue Operations**

Email Address

**Kevin Okabe**

kokabe@mvcc.vic.gov.au

**Ticketing Services Supervisor**

Email Address

**William Huang**

whuang@mvcc.vic.gov.au

**Catering Services Supervisor**

Email Address

**Lucio Pezzimenti**

lpezzimenti@mvcc.vic.gov.au

**Venue Contact**

Box Office

(03) 9243 9191



**Clocktower  
Centre**